



2/160 Rochford Street Erskineville NSW

4 2 1

Step into something truly special with this one-of-a-kind, two-level warehouse residence located in the vibrant heart of Erskineville. Offering expansive proportions and multiple living zones, this property delivers flexibility, character, and an urban edge rarely found in rental homes.

The open-plan layout features distinct living areas across two levels, making it ideal for those who value space, creativity, or a live-work style setup. With two well-appointed bathrooms, comfort and convenience are already taken care of.

Flexible Bedroom Options

The property can be enjoyed as-is in its current open, loft-style configuration, or for tenants needing more defined

Type : House

Price : \$2,500 pw

View : <https://www.yorkpropertygroup.com.au/lease/nsw/inner-west/erskineville/residential/house/8609111>

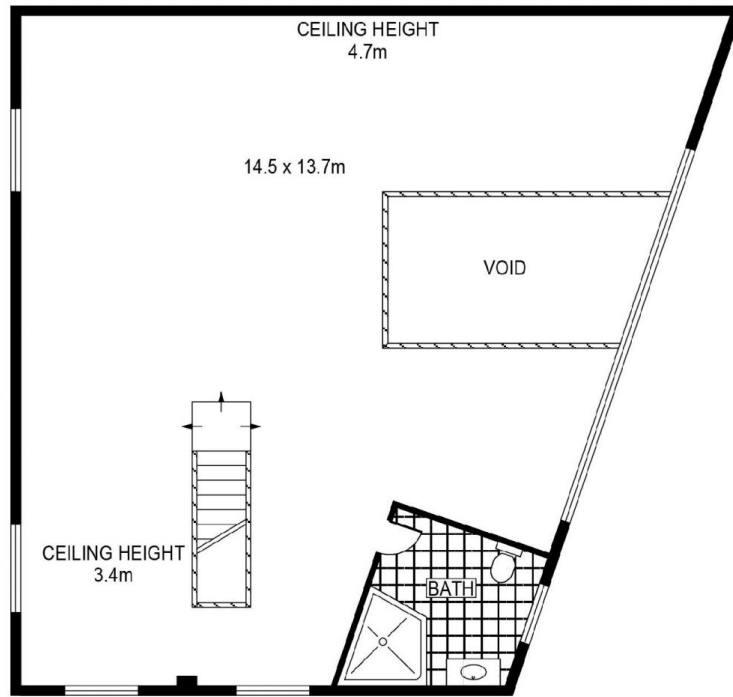


Raphael Pulera
9816 9860

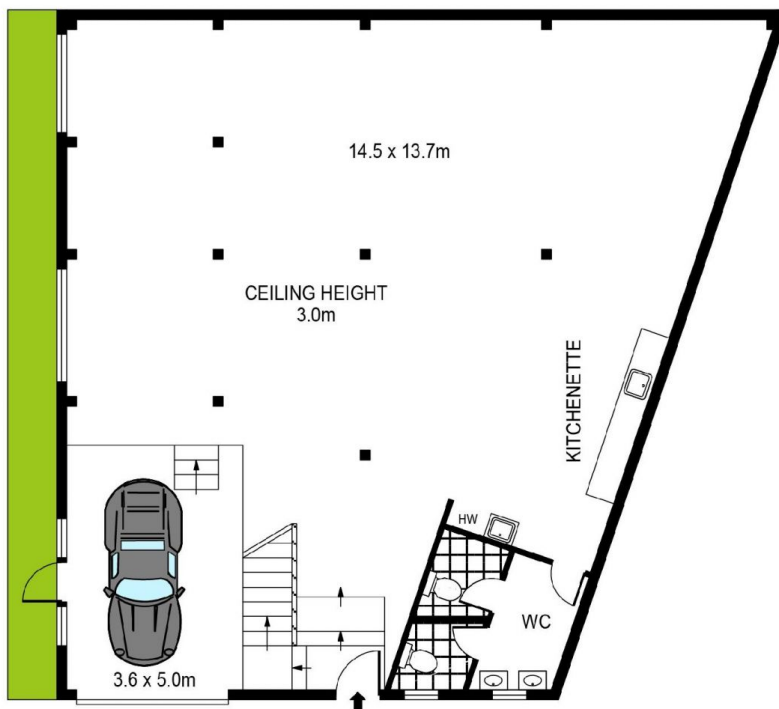


David Mirabile
0421 471 929

[For full version visit the website](https://www.yorkpropertygroup.com.au)



FIRST FLOOR



GROUND FLOOR



PLANS SHOWN ONLY INDICATIVE OF LAYOUT. DIMENSIONS ARE APPROXIMATE.



2/160 ROCHFORD STREET

ERSKINEVILLE