



48 Henley Marine Drive Rodd Point NSW

4 🛏 2 🚿 2 🚗

Positioned within one of Rodd Point's most prestigious and tightly held enclaves, this exceptional offering presents a rare opportunity to secure an expansive 820sqm parcel with an extraordinary 18 metre frontage, a landholding rarely seen within the Rodd Point market. Combining substantial proportions with a premier position opposite Timbrell Park, this is a blue-chip opportunity within one of the Inner West's most sought after water reserve precincts.

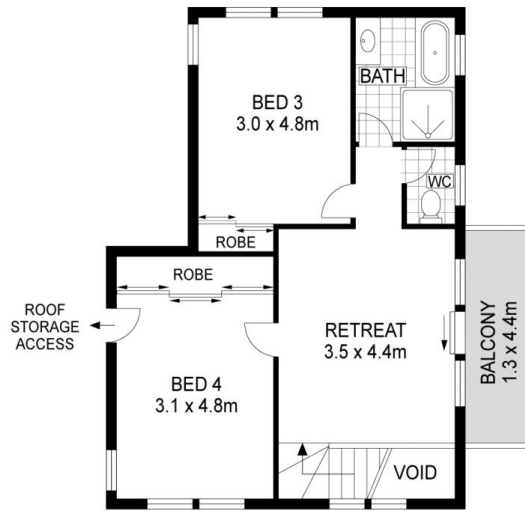
Set on an elevated level block and only moments from the Bay Run, waterfront reserves and village amenities, the existing residence is neat, well-maintained and immediately comfortable, while offering outstanding scope to renovate, rebuild or create a luxury dream home (STCA). The rare frontage and generous landholding also provides

Type : House
Price : Contact Agent - Auction
Land Size : 820 sqm
View : <https://www.yorkpropertygroup.com.au/sale/nsw/inner-west/rodd-point/residential/house/8705249>

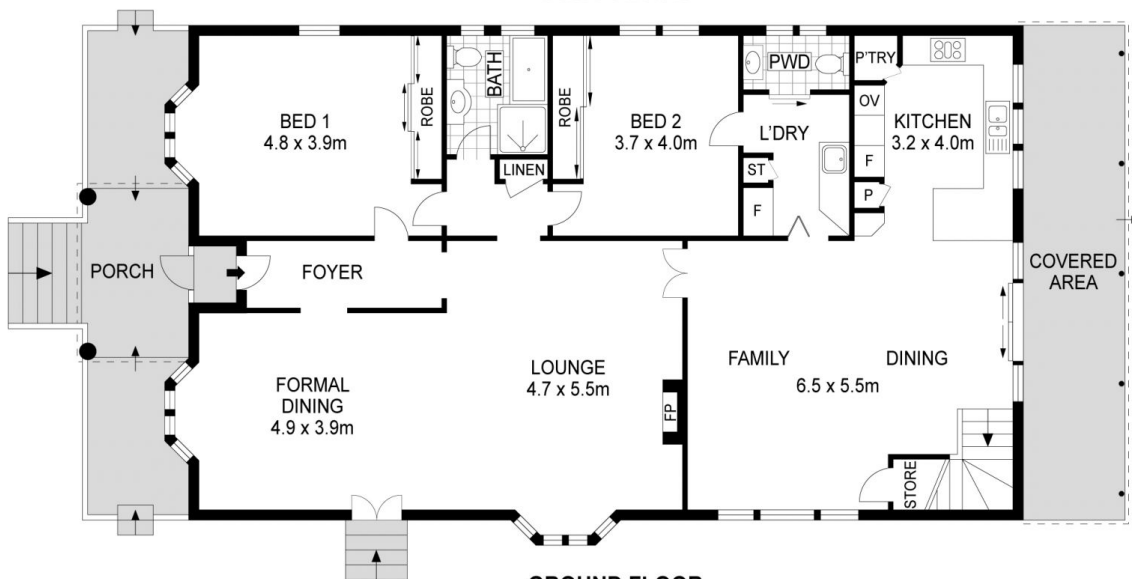


Raphael Pulera
9816 9860

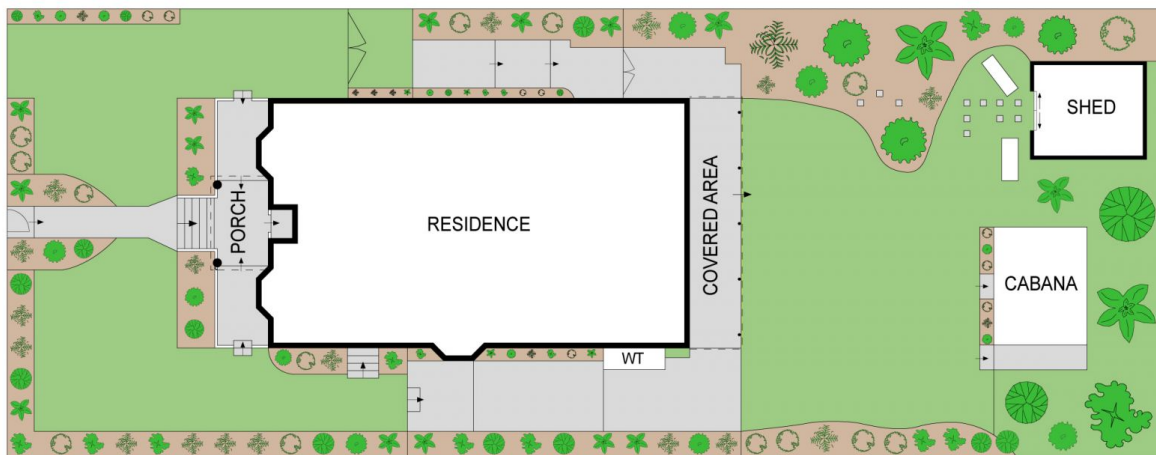
[For full version visit the website](https://www.yorkpropertygroup.com.au)



FIRST FLOOR



GROUND FLOOR



SITE PLAN

0 1 2 3 4 5 SCALE (METRES)

PLANS SHOWN ONLY INDICATIVE OF LAYOUT. DIMENSIONS ARE APPROXIMATE.
 Ref No: 109178



TOTAL: 820 m²